

LAG3 [17B4] - 147Sm

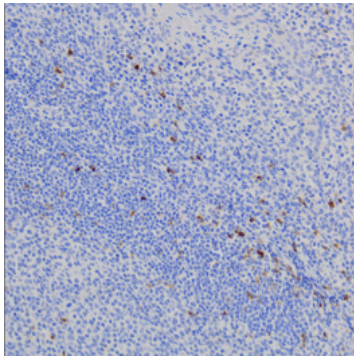
Catalog: 714701

Clone: 17B4

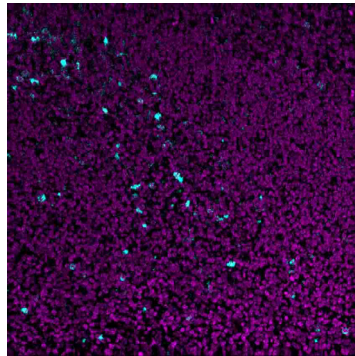
Isotype: Mouse IgG1

Reactivity: Human*

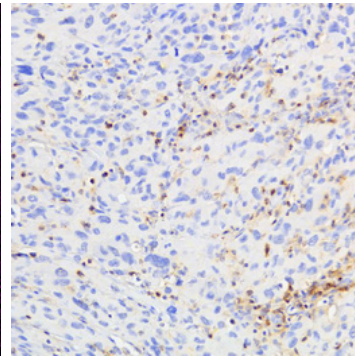
Application: MIBI-FFPE

Storage: Supplied in antibody stabilizer with 0.05% sodium azide. Store at 4°C


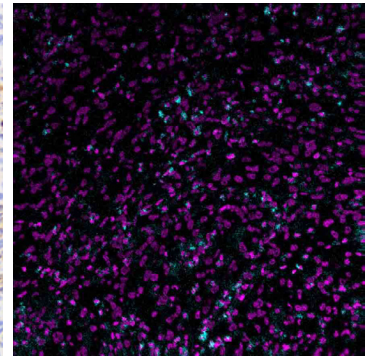
IHC: LAG3 staining of FFPE human tonsil



MIBI: LAG3 staining (cyan) of FFPE human tonsil, costained with dsDNA (magenta)



IHC: LAG3 staining of FFPE human melanoma



MIBI: LAG3 staining (cyan) of FFPE human melanoma, costained with dsDNA (magenta)

Background

LAG3 (lymphocyte activation gene-3, CD223) is structurally similar to CD4 and is expressed on activated T cells, regulatory T cells, NK cells, B cells and plasmacytoid dendritic cells. LAG3 is an immune checkpoint receptor, binding to MHC-II with greater affinity than CD4 and inhibiting cell activation and proliferation. A second ligand of LAG3 is fibrinogen-like protein 1 (FGL1), a liver-secreted protein that is also expressed by tumor cells contributing to tumor evasion of the immune system. [https:// doi. org/10.1016/j.cell.2018.11.010](https://doi.org/10.1016/j.cell.2018.11.010).

Validation

Each lot of conjugated antibody is quality control tested by staining tissue following the MIBI Staining Protocol optimized for the applicable tissue format with subsequent MIBIScope analysis using the appropriate positive and negative tissue field of views. These results are pathologist verified.

Recommended Usage

Human FFPE: 1:100 dilution. For optimal results, the antibody should be titrated for each desired application.

References

Wang et al., Fibrinogen-like Protein 1 Is a Major Immune Inhibitory Ligand of LAG-3, *Cell* (2019).

* Conjugate tested on human tissue.