

CD56 [MRQ-42] - 151Eu

Catalog: 715101

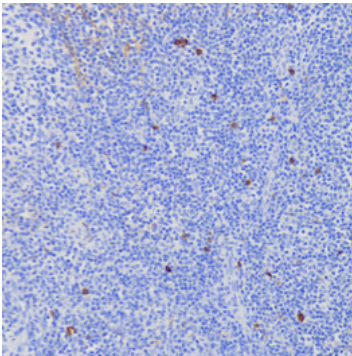
Clone: MRQ-42

Isotype: Rabbit IgG

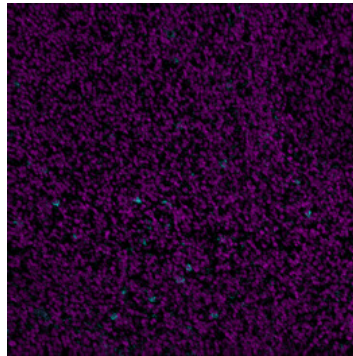
Reactivity: Human*

Application: MIBI-FFPE

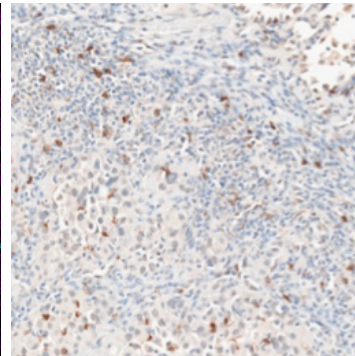
Storage: Supplied in antibody stabilizer with 0.05% sodium azide. Store at 4°C



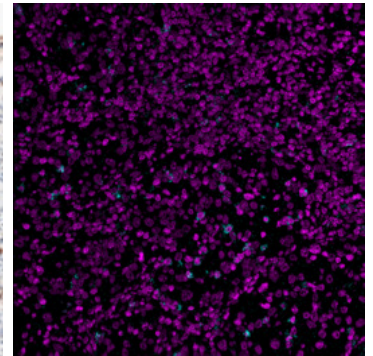
IHC: CD56 staining of FFPE human tonsil



MIBI: CD56 staining (cyan) of FFPE human tonsil, costained with dsDNA (magenta)



IHC: CD56 staining of FFPE human lung adenocarcinoma



MIBI: CD56 staining (cyan) of FFPE human lung adenocarcinoma, costained with dsDNA (magenta)

Background

CD56, also known as neural cell adhesion molecule-1 (NCAM), is useful in staining NK cells, NK-T cells, neurons, multiple myelomas, neuroendocrine tumors, small cell lung cancer, and acute myeloid leukaemia. CD56 is involved in cell adhesion between neurons and muscle, neurite outgrowth and synaptic plasticity.

Validation

Each lot of conjugated antibody is quality control tested by staining tissue following the MIBI Staining Protocol optimized for the applicable tissue format with subsequent MIBIScope analysis using the appropriate positive and negative tissue field of views. These results are pathologist verified.

Recommended Usage

Human FFPE: 1:100 dilution. For optimal results, the antibody should be titrated for each desired application.

References

Jensen, M., Berthold, F. Targeting the neural cell adhesion molecule in cancer. *Cancer Letters*. 2007; **258**(1):9-21.

* Conjugate tested on human tissue.