

CD3 [MRQ-39] - 159Tb

Catalog: 715903

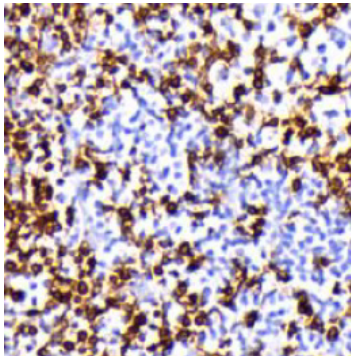
Clone: MRQ-39

Isotype: Rabbit IgG

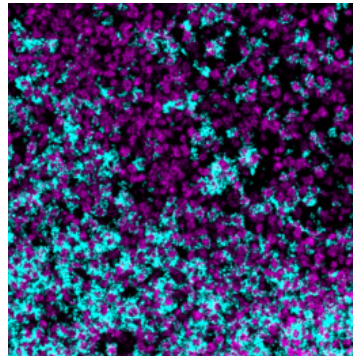
Reactivity: Human*

Application: MIBI-FFPE

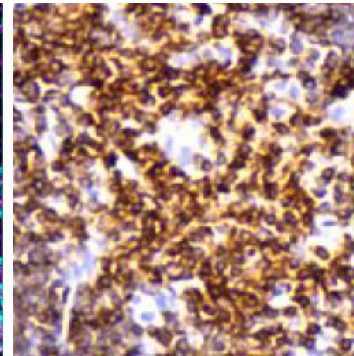
Storage: Supplied in antibody stabilizer with 0.05% sodium azide. Store at 4°C



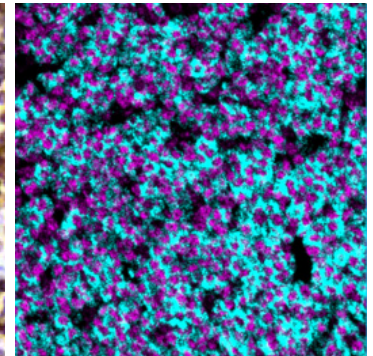
IHC: CD3 staining of FFPE human tonsil



MIBI: CD3 staining (cyan) of FFPE human tonsil, counter-stained with dsDNA (magenta)



IHC: CD3 staining of FFPE human thymus



MIBI: CD3 staining (cyan) of FFPE human thymus, counter-stained with dsDNA (magenta)

Background

CD3 is a pan-T-cell marker that reacts with an antigen present at the surface and cytoplasm of both immature and mature T lymphocytes. CD3 is also expressed in almost all T-cell lymphomas and leukaemias, and can therefore be used to distinguish them from B-cell and myeloid neoplasms.

Validation

Each lot of conjugated antibody is quality control tested by staining tissue following the MIBI Staining Protocol optimized for the applicable tissue format with subsequent MIBIScope analysis using the appropriate positive and negative tissue field of views. These results are pathologist verified.

Recommended Usage

Human FFPE: 1:100 dilution. For optimal results, the antibody should be titrated for each desired application.

References

Leong AS, Cooper K, Leong FJ (2003). *Manual of Diagnostic Cytology* (2nd ed.). Greenwich Medical Media, Ltd. pp. 63-64. ISBN 1-84110-100-1.

* Conjugate tested on human tissue.