

## Podoplanin [D2-40] - 170Er

**Catalog:** 717002

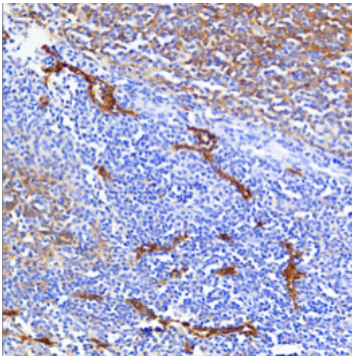
**Clone:** D2-40

**Isotype:** Mouse IgG1

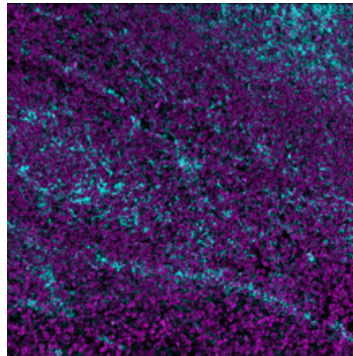
**Reactivity:** Human\*

**Application:** MIBI-FFPE

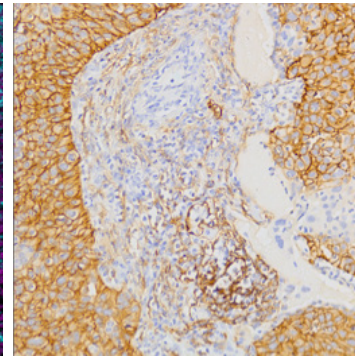
**Storage:** Supplied in antibody stabilizer with 0.05% sodium azide. Store at 4°C



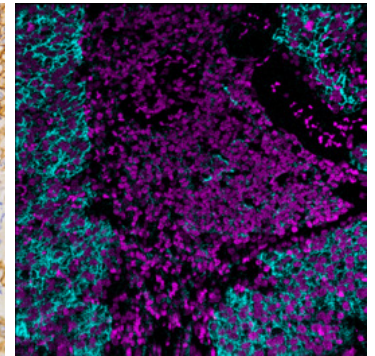
**IHC:** Podoplanin staining of FFPE human tonsil



**MIBI:** Podoplanin staining (cyan) of FFPE human tonsil, costained with dsDNA (magenta)



**IHC:** Podoplanin staining of FFPE human lung squamous cell carcinoma



**MIBI:** Podoplanin staining (cyan) of FFPE human lung squamous cell carcinoma, costained with dsDNA (magenta)

### Background

Podoplanin is a mucin-type membrane protein expressed on the endothelium of lymphatic vessels, lung alveolar cells, and kidney podocytes. Podoplanin is also expressed in tumor cells, such as squamous cell carcinomas, and in cancer-associated fibroblasts (CAFs). High levels of podoplanin are associated with an increased incidence of metastasis to lymph nodes and decreased survival time of patients.

### Validation

Each lot of conjugated antibody is quality control tested by staining tissue following the MIBI Staining Protocol optimized for the applicable tissue format with subsequent MIBIScope analysis using the appropriate positive and negative tissue field of views. These results are pathologist verified.

### Recommended Usage

Human FFPE: 1:100 dilution. For optimal results, the antibody should be titrated for each desired application.

### References

Ugorski, M., Dziegiel, P., Suchanski, J. Podoplanin – a small glycoprotein with many faces. *Am J Cancer Res.* 2016; **6**(2):370-86.

\* Conjugate tested on human tissue.