

## CD138 [SP152] - 174Yb

**Catalog:** 717401

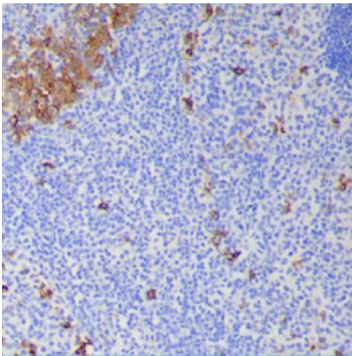
**Clone:** SP152

**Isotype:** Rabbit IgG

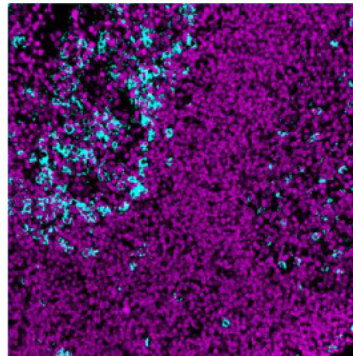
**Reactivity:** Human\*

**Application:** MIBI-FFPE

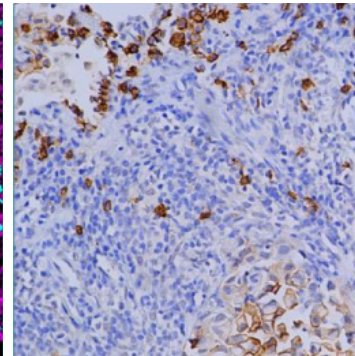
**Storage:** Supplied in antibody stabilizer with 0.05% sodium azide. Store at 4°C



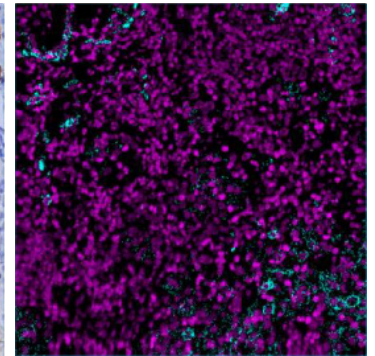
**IHC:** CD138 staining of FFPE human tonsil



**MIBI:** CD138 staining (cyan) of FFPE human tonsil, counterstained with dsDNA (magenta)



**IHC:** CD138 staining of FFPE human lung adenocarcinoma



**MIBI:** CD138 staining (cyan) of FFPE human lung adenocarcinoma, counterstained with dsDNA (magenta)

### Background

CD138, also known as syndecan-1, is a transmembrane proteoglycan and is expressed by plasma cells, normal squamous epithelium, and by several tumor types including multiple myeloma, breast cancer, and lung adenocarcinoma. CD138 serves to mediate cell binding and cytoskeletal organization.

### Validation

Each lot of conjugated antibody is quality control tested by staining tissue following the MIBI Staining Protocol optimized for the applicable tissue format with subsequent MIBIScope analysis using the appropriate positive and negative tissue field of views. These results are pathologist verified.

### Recommended Usage

Human FFPE: 1:100 dilution. For optimal results, the antibody should be titrated for each desired application.

### References

Kind, S., Merenkow, C., Buscheck, F., et al. Prevalence of Syndecan-1 (CD138) Expression in Different Kinds of Human Tumors and Normal Tissues. *Disease Markers*. 2019; Article ID 4928315.

\* Conjugate tested on human tissue.