

CD38 [E7Z8C] - 174Yb

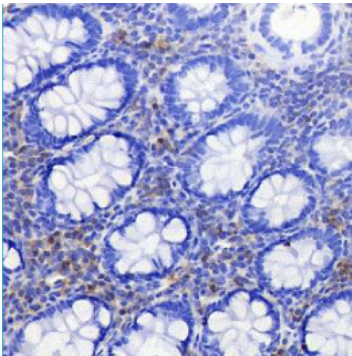
Catalog: 717403

Clone: E7Z8C

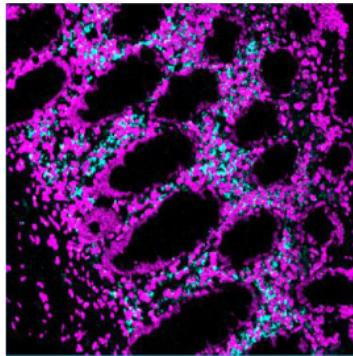
Isotype: Rabbit IgG

Reactivity: Human*

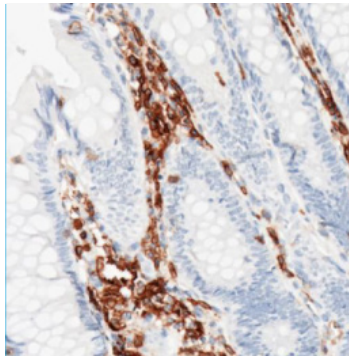
Application: MIBI-FFPE

Storage: Supplied in antibody stabilizer with 0.05% sodium azide. Store at 4°C


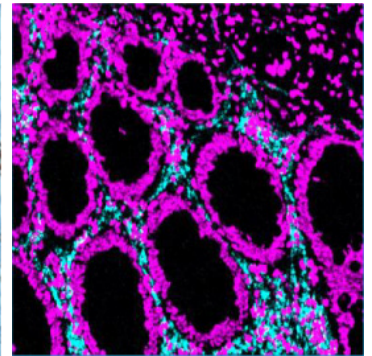
IHC: CD38 staining of FFPE human colon



MIBI: CD38 staining (cyan) of FFPE human colon, counter-stained with dsDNA (magenta)



IHC: CD38 staining of FFPE human appendix



MIBI: CD38 staining (cyan) of FFPE human appendix, counter-stained with dsDNA (magenta)

Background

CD38 is a glycoprotein found on the surface of many white blood cells, including CD4+, CD8+, B lymphocytes and natural killer cells. CD38 expression is useful in identifying plasma cells and myelomas, and as a marker for activated B and T cells. CD38 expression also has prognostic implication in chronic lymphocytic leukemia.

Validation

Each lot of conjugated antibody is quality control tested by staining tissue following the MIBI Staining Protocol optimized for the applicable tissue format with subsequent MIBIScope analysis using the appropriate positive and negative tissue field of views. These results are pathologist verified.

Recommended Usage

Human FFPE: 1:100 dilution. For optimal results, the antibody should be titrated for each desired application.

References

Shaji Kumar et al. Immunophenotyping in multiple myeloma and related plasma cell disorders. *Best Pract Res Clin Haematol.* 2010 Sep; **23**(3): 433-451.

Chuan He et al. Prognostic significance of CD38 for chronic lymphocytic leukemia: a meta-analysis. *Int J Clin Exp Med* 2017; **10**(3): 4305-4312.

* Conjugate tested on human tissue.