

CD4 [RM4-5] - 143Nd

Catalog: 714302

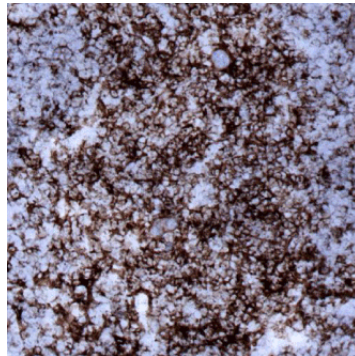
Clone: [RM4-5]

Isotype: Rat IgG

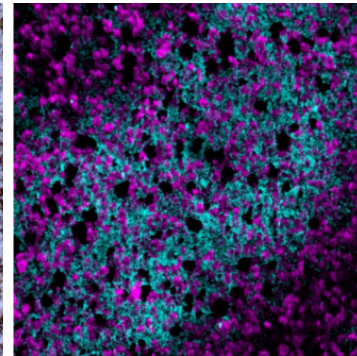
Reactivity: Mouse*

Application: MIBI-Fresh Frozen

Storage: Supplied in antibody stabilizer with 0.05% sodium azide. Store at 4°C



IHC: CD4 staining of fresh frozen mouse spleen



MIBI: CD4 staining (cyan) of fresh frozen mouse spleen, costained with dsDNA (magenta)

Background

CD4 is expressed by thymocytes, helper T cells, dendritic cells, type II NKT cells, and monocytes/macrophages. CD4 expression is used to identify helper T cells of which there are many different subsets including Th1, Th2, Th9, Th17, regulatory T cell, follicular helper T cell, each contributing to immune function through their unique cytokine profile.

Validation

Each lot of conjugated antibody is quality control tested by staining tissue following the MIBI Staining Protocol optimized for the applicable tissue format with subsequent MIBIScope analysis of stained tissue microarray using the appropriate positive and negative tissue field of views. These results are pathologist verified.

Recommended Usage

Mouse Fresh Frozen Tissue: 1:100 dilution. For optimal results, the antibody should be titrated for each desired application.

References

Rishi Vishal Luckheeram, Rui Zhou, Asha Devi Verma, and Bing Xia, "CD4+T Cells: Differentiation and Functions," *Clinical and Developmental Immunology*, vol. 2012, Article ID 925135, 12 pages, 2012.

* Conjugate tested on mouse fresh frozen tissue.