

## CD11b [EPR1344] - 155Gd

**Catalog:** 715504

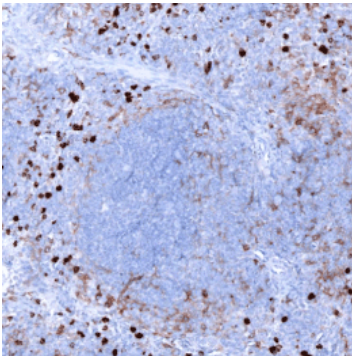
**Clone:** [EPR1344]

**Isotype:** Rabbit IgG

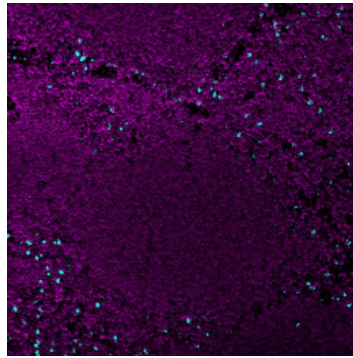
**Reactivity:** Mouse\*, Rat, Human, Pig, and Rhesus Monkey

**Application:** MIBI-FFPE

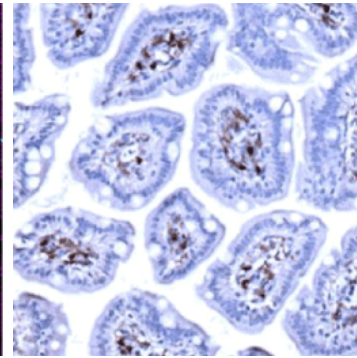
**Storage:** Supplied in antibody stabilizer with 0.05% sodium azide. Store at 4°C



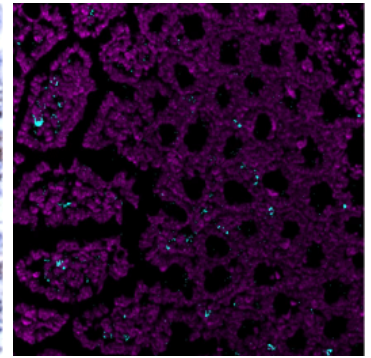
**IHC:** CD11b staining of FFPE mouse spleen



**MIBI:** CD11b staining (cyan) of FFPE mouse spleen, costained with dsDNA (magenta)



**IHC:** CD11b staining of FFPE mouse ileum



**MIBI:** CD11b staining (cyan) of FFPE mouse ileum, costained with dsDNA (magenta)

### Background

CD11b belongs to the integrin alpha chain family and is predominantly expressed on myeloid cell populations such as macrophages, monocytes, neutrophils and classical dendritic cells. CD11b expression can also be used to identify microglia in the brain and spinal cord.

### Validation

Each lot of conjugated antibody is quality control tested by staining tissue following the MIBI Staining Protocol optimized for the applicable tissue format with subsequent MIBIscope analysis of stained tissue microarray using the appropriate positive and negative tissue field of views. These results are pathologist verified.

### Recommended Usage

Mouse FFPE: 1:100 dilution. For optimal results, the antibody should be titrated for each desired application.

### References

R S Larson, T A Springer. Structure and function of leukocyte integrins. *Immunol Rev.* 1990 Apr;114:181-217.

Melanie Greter et al. Microglia Versus Myeloid Cell Nomenclature during Brain Inflammation. *Front Immunol.* 2015; 6: 249.

\* Conjugate tested on mouse FFPE tissue.