

## CD8 [53-6.7] - 158Gd

**Catalog:** 715802

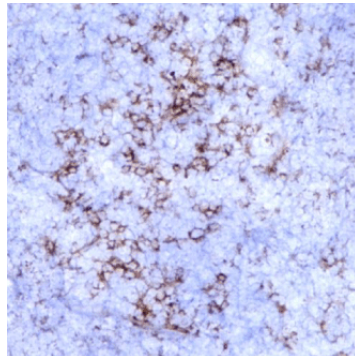
**Clone:** [53-6.7]

**Isotype:** Rat IgG

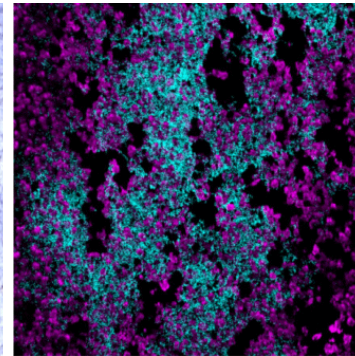
**Reactivity:** Mouse\*

**Application:** MIBI-Fresh Frozen

**Storage:** Supplied in antibody stabilizer with 0.05% sodium azide. Store at 4°C



**IHC:** CD8 staining of fresh frozen mouse spleen



**MIBI:** CD8 staining (cyan) of fresh frozen mouse spleen, costained with dsDNA (magenta)

### Background

CD8 is a co-receptor for the T cell receptor (TCR) and is expressed on cytotoxic T cells. It is also expressed on cortical thymocytes, dendritic cells and NK cells. CD8 binds to MHC Class I to aid in antigen recognition and TCR-mediated activation. CD8 forms dimers of CD8 $\alpha$  and CD8 $\beta$  and clone 53-6.7 recognizes the alpha form of CD8.

### Validation

Each lot of conjugated antibody is quality control tested by staining tissue following the MIBI Staining Protocol optimized for the applicable tissue format with subsequent MIBIScope analysis of stained tissue microarray using the appropriate positive and negative tissue field of views. These results are pathologist verified.

### Recommended Usage

Mouse Fresh Frozen Tissue: 1:100 dilution. For optimal results, the antibody should be titrated for each desired application.

### References

Guy, C. S. and Vignali, D. A. Organization of proximal signal initiation at the TCR:CD3 complex. *Immunological Reviews*. 2009; 232: 7-21.

\* Conjugate tested on mouse fresh frozen tissue.