

CD3 ϵ [EPR22667-12] - 159Tb

Catalog: 715904

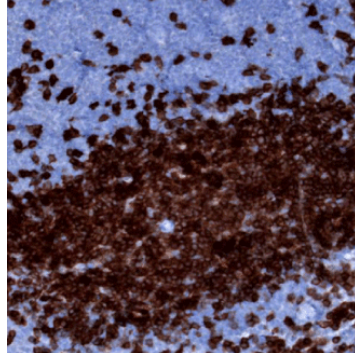
Clone: [EPR22667-12]

Isotype: Rabbit IgG

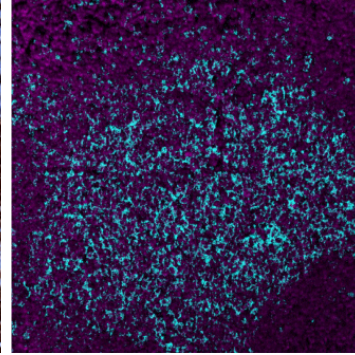
Reactivity: Mouse*

Application: MIBI-FFPE

Storage: Supplied in antibody stabilizer with 0.05% sodium azide. Store at 4°C



IHC: CD3 ϵ staining of FFPE mouse spleen



MIBI: CD3 ϵ staining (cyan) of FFPE mouse spleen, costained with dsDNA (magenta)

Background	CD3-epsilon (CD3 ϵ), together with other CD3 subunits, forms the CD3-TCR complex. It is used as a pan-T-cell marker that reacts with an antigen present at the surface and cytoplasm of both immature and mature T lymphocytes, including NK/T cells. CD3 ϵ is also expressed in almost all T-cell lymphomas and leukaemias, and can therefore be used to distinguish them from B-cell and myeloid neoplasms.
Validation	Each lot of conjugated antibody is quality control tested by staining tissue following the MIBI Staining Protocol optimized for the applicable tissue format with subsequent MIBIScope analysis of stained tissue microarray using the appropriate positive and negative tissue field of views. These results are pathologist verified.
Recommended Usage	Mouse FFPE: 1:100 dilution. For optimal results, the antibody should be titrated for each desired application.

References

Leong AS, Cooper K, Leong FJ (2003). *Manual of Diagnostic Cytology* (2nd ed.). Greenwich Medical Media, Ltd. pp. 63-64. ISBN 1-84110-100-1.

* Conjugate tested on mouse FFPE tissue.