

IgM [RMM-1] - 166Er

Catalog: 716602

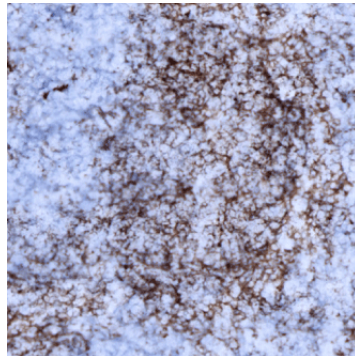
Clone: [RMM-1]

Isotype: Rat IgG

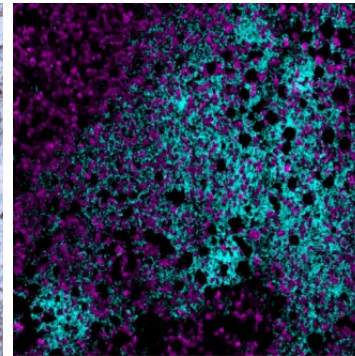
Reactivity: Mouse*

Application: MIBI-Fresh Frozen

Storage: Supplied in antibody stabilizer with 0.05% sodium azide. Store at 4°C



IHC: IgM staining of fresh frozen mouse spleen



MIBI: IgM staining (cyan) of fresh frozen mouse spleen, costained with dsDNA (magenta)

Background	IgM is one of the five membrane-bound immunoglobulin molecules of the B cell receptors (BCRs) on the B cell surface. IgM is expressed intracellularly, during early stages of B cell development, and then on the surface of more mature B cells in the bone marrow and peripheral B cells. 50% of peripheral blood memory B cells express IgM with or without IgD.
Validation	Each lot of conjugated antibody is quality control tested by staining tissue following the MIBI Staining Protocol optimized for the applicable tissue format with subsequent MIBIScope analysis of stained tissue microarray using the appropriate positive and negative tissue field of views. These results are pathologist verified.
Recommended Usage	Mouse Fresh Frozen Tissue: 1:100 dilution. For optimal results, the antibody should be titrated for each desired application.

References

Palash C. Maity *et al.* Isotype Specific Assembly of B Cell Antigen Receptors and Synergism With Chemokine Receptor CXCR4. *Front Immunol.* 2018; 9: 2988.

* Conjugate tested on mouse fresh frozen tissue.