

B220 [RA3-6B2] - 167Er

Catalog: 716702

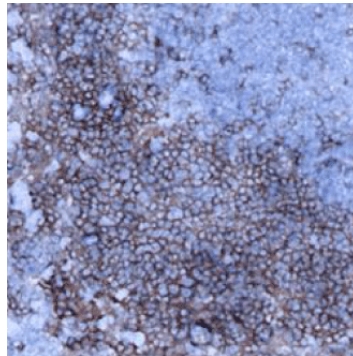
Clone: [RA3-6B2]

Isotype: Rat IgG

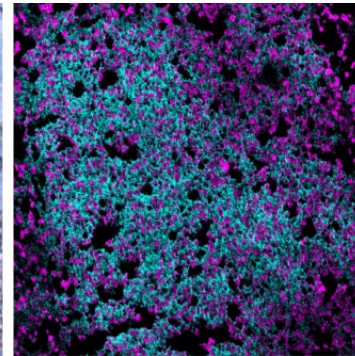
Reactivity: Mouse* and Human

Application: MIBI-Fresh Frozen

Storage: Supplied in antibody stabilizer with 0.05% sodium azide. Store at 4°C



IHC: B220 staining of fresh frozen mouse spleen



MIBI: B220 staining (cyan) of fresh frozen mouse spleen, costained with dsDNA (magenta)

Background

B220 is the mouse CD45 isoform CD45R, which is predominantly expressed on all B lymphocytes, including pro-, mature and activated B cells. It is also expressed on subsets of T, NK and dendritic cells. B220 (CD45R) is commonly used as a murine pan B cell marker.

Validation

Each lot of conjugated antibody is quality control tested by staining tissue following the MIBI Staining Protocol optimized for the applicable tissue format with subsequent MIBIscope analysis of stained tissue microarray using the appropriate positive and negative tissue field of views. These results are pathologist verified.

Recommended Usage

Mouse Fresh Frozen Tissue: 1:100 dilution. For optimal results, the antibody should be titrated for each desired application.

References

Hardy, R.R. *et al.* Resolution and characterization of pro-B and pre-pro-B cell stages in normal mouse bone marrow. *J. Exp. Med.* 1991. 173:1213.

* Conjugate tested on mouse fresh frozen tissue.