

IgD [11-26c.2a] - 171Yb

Catalog: 717102

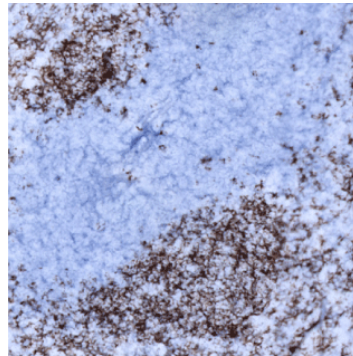
Clone: [11-26c.2a]

Isotype: Rat IgG

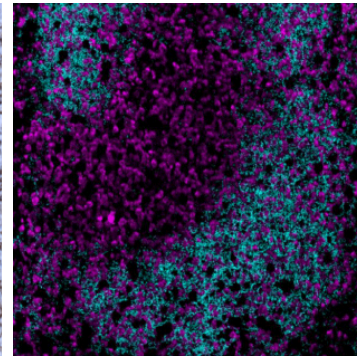
Reactivity: Mouse*

Application: MIBI-Fresh Frozen

Storage: Supplied in antibody stabilizer with 0.05% sodium azide. Store at 4°C



IHC: IgD staining of fresh frozen mouse spleen



MIBI: IgD staining (cyan) of fresh frozen mouse spleen, costained with dsDNA (magenta)

Background

IgD is one of the five membrane-bound immunoglobulin molecules of the B cell receptors (BCRs) on the B cell surface. IgD expression begins at the transitional stage between immature and mature B cell compartments. Elevated surface IgD and reduced surface IgM expression are hallmarks of anergic or autoreactive B cells resulting from exposure of peripheral B cells to endogenous self-antigens, creating self tolerance while maintaining responsiveness to foreign antigens.

Validation

Each lot of conjugated antibody is quality control tested by staining tissue following the MIBI Staining Protocol optimized for the applicable tissue format with subsequent MIBIScope analysis of stained tissue microarray using the appropriate positive and negative tissue field of views. These results are pathologist verified.

Recommended Usage

Mouse Fresh Frozen Tissue: 1:100 dilution. For optimal results, the antibody should be titrated for each desired application.

References

Cindy Gutzeit et al. The enigmatic function of IgD: some answers at last. *Eur J Immunol.* 2018 Jul;48(7):1101-1113.

* Conjugate tested on mouse fresh frozen tissue.