

CD45 [30-F11] - 175Lu

Catalog: 717502

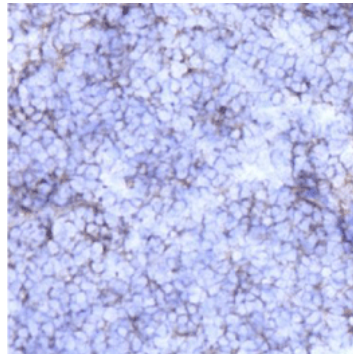
Clone: [30-F11]

Isotype: Rat IgG

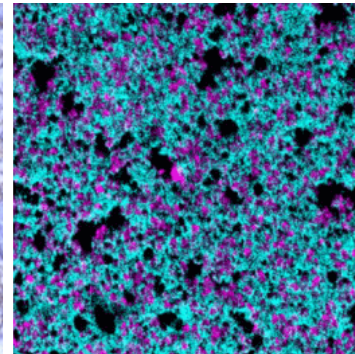
Reactivity: Mouse*

Application: MIBI-Fresh Frozen

Storage: Supplied in antibody stabilizer with 0.05% sodium azide. Store at 4°C



IHC: CD45 staining of fresh frozen mouse spleen



MIBI: CD45 staining (cyan) of fresh frozen mouse spleen, costained with dsDNA (magenta)

Background

CD45, also known as the leukocyte common antigen, is a type I transmembrane protein and a member of the protein tyrosine phosphatase expressed on all hematopoietic cells except mature erythrocytes, platelets and plasma cells. CD45 isoforms show cell-type and differentiation-stage specific expression, a pattern which is quite well conserved in mammals. These isoforms are often used as markers that identify and distinguish between different types of immune cells

Validation

Each lot of conjugated antibody is quality control tested by staining tissue following the MIBI Staining Protocol optimized for the applicable tissue format with subsequent MIBIScope analysis of stained tissue microarray using the appropriate positive and negative tissue field of views. These results are pathologist verified.

Recommended Usage

Mouse Fresh Frozen Tissue: 1:100 dilution. For optimal results, the antibody should be titrated for each desired application.

References

Hermiston ML, Xu Z, Weiss A (2003). "CD45: a critical regulator of signaling thresholds in immune cells". *Annual Review of Immunology*. 21: 107-37.

* Conjugate tested on mouse fresh frozen tissue.