

PAX5 [D7H5X] - 165Ho

Catalog: 716502

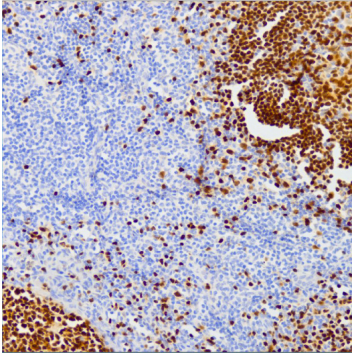
Clone: D7H5X

Isotype: Rabbit IgG

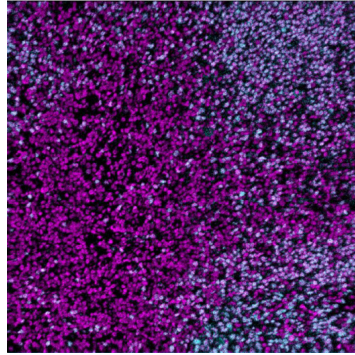
Reactivity: Human*, Mouse*

Application: MIBI-FFPE

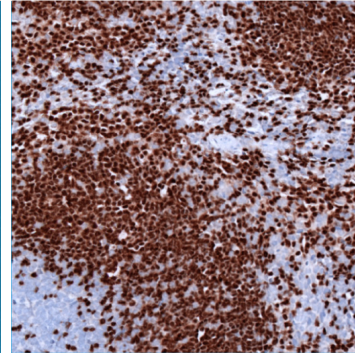
Storage: Supplied in antibody stabilizer with 0.05% sodium azide. Store at 4°C



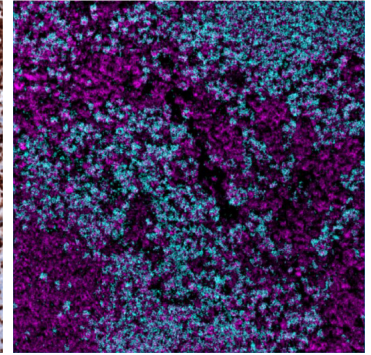
IHC: PAX5 staining of FFPE human tonsil



MIBI: PAX5 staining (cyan) of FFPE human tonsil, costained with dsDNA (magenta)



IHC: PAX5 staining of FFPE mouse spleen



MIBI: PAX5 staining (cyan) of FFPE mouse spleen, costained with dsDNA (magenta)

Background

PAX5, also known as B cell-specific activator protein (BSAP), is a B cell-specific transcription factor that shows nuclear staining and is useful in identifying cells of B-cell lineage. Pax5 represses the transcription of lineage-inappropriate genes and concurrently activates the expression of B-lymphoid signaling molecules. Pax5 staining is used in the diagnosis and subclassification of lymphomas.

Validation

Each lot of conjugated antibody is quality control tested by staining tissue following the MIBI Staining Protocol optimized for the applicable tissue format with subsequent MIBIScope analysis of stained tissue microarray using the appropriate positive and negative tissue field of views. These results are pathologist verified.

Recommended Usage

Human and Mouse FFPE: 1:100 dilution. For optimal results, the antibody should be titrated for each desired application.

References

Busslinger M. Transcriptional control of early B cell development. *Annu Rev Immunol.* 2004; 22:55-79.

Feldman A.L., Dogan A. Diagnostic uses of Pax5 immunohistochemistry. *Adv Anat Pathol.* 2007;14(5):323-34.

* Conjugate tested on human tissue and mouse tissue.