

LY6G [1A8] - 173Yb

Catalog: 717302

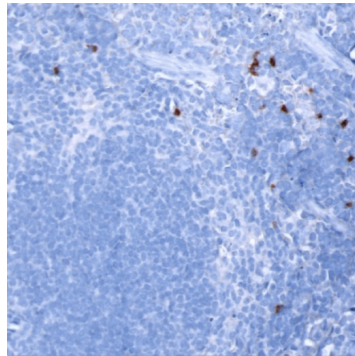
Clone: 1A8

Isotype: Rat IgG

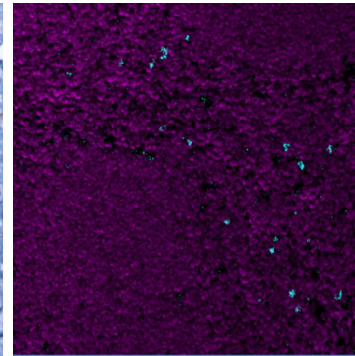
Reactivity: Mouse*

Application: MIBI-FFPE

Storage: Supplied in antibody stabilizer with 0.05% sodium azide. Store at 4°C



IHC: Ly6G staining of FFPE mouse spleen



MIBI: Ly6G staining (cyan) of FFPE mouse spleen, costained with dsDNA (magenta)

Background

Ly6G (Lymphocyte antigen 6 complex locus G6D) is a component of the myeloid differentiation antigen Gr-1, together with Ly6C. Unlike clone RB6-8C5 of Gr-1 that binds to both Ly6C and Ly6G, clone 1A8 only reacts with Ly6G. Ly-6G is a 25-kDa GPI protein expressed almost exclusively by granulocytic myeloid cells. In mice, clone 1A8 of Ly6G is typically used in combination with CD11b for phenotypic analysis of monocytes, macrophages and granulocytes.

Validation

Each lot of conjugated antibody is quality control tested by staining tissue following the MIBI Staining Protocol optimized for the applicable tissue format with subsequent MIBIScope analysis of stained tissue microarray using the appropriate positive and negative tissue field of views. These results are pathologist verified.

Recommended Usage

Mouse FFPE: 1:100 dilution. For optimal results, the antibody should be titrated for each desired application.

References

Shawn Rose, Alexander Misharin, and Harris Perlman. A novel Ly6C/Ly6G-based strategy to analyze the mouse splenic myeloid compartment. *Cytometry A*. 2012 Apr; 81(4): 343-350.

* Conjugate tested on mouse tissue.