

CD163 (D6U1J)- 142Nd

Catalog: 714204

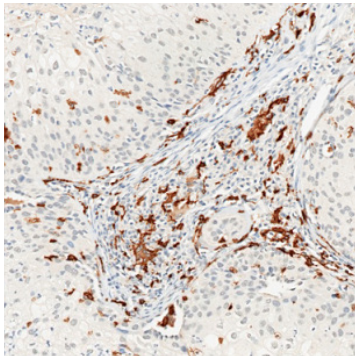
Clone: D6U1J

Isotype: Rabbit IgG

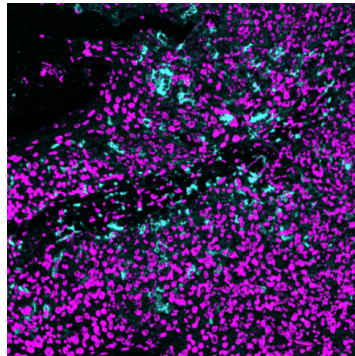
Reactivity: Human*, Monkey

Application: MIBI-FFPE

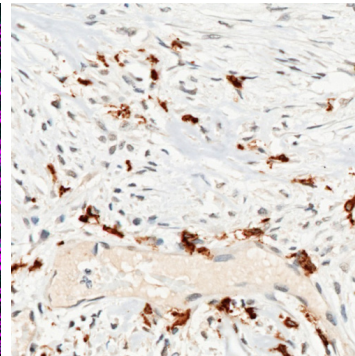
Storage: Supplied in antibody stabilizer with 0.05% sodium azide. Store at 4°C



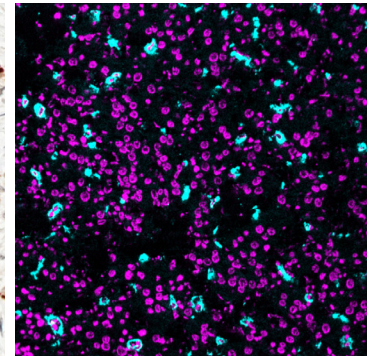
IHC: CD163 antibody staining of FFPE human Tonsil



MIBI: CD163 staining (cyan) of FFPE human Tonsil, counterstained with dsDNA (magenta)



IHC: CD163 antibody staining of FFPE human liver



MIBI: CD163 staining (cyan) of FFPE human liver, counterstained with dsDNA (magenta)

Background

CD163 is a transmembrane scavenger receptor expressed on the surface of monocytes and macrophages. CD163 is used as a surface marker of M2 type monocytes/macrophages, including M2 type tumor associated macrophages (TAMs), which facilitate cancer progression by secreting cytokines to promote angiogenesis, immunosuppression and metastasis.

Validation

Each lot of conjugated antibody is quality control tested by staining tissue following the MIBI Staining Protocol optimized for the applicable tissue format with subsequent MIBIScope analysis using the appropriate positive and negative tissue field of views.

Recommended Usage

Human FFPE: 4 ug/mL dilution. For optimal results, the antibody should be titrated for each desired application.

References

Yoshihiro Komohara et al. Clinical significance of macrophage heterogeneity in human malignant tumors. *Cancer Sci.* 2014 Jan;105(1):1-8.

* Conjugate tested on human tissue.