

CD14 [D7A2T] - 154Sm

Catalog: 715402

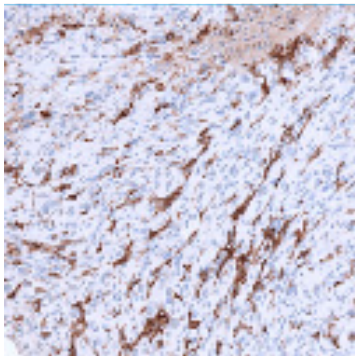
Clone: D7A2T

Isotype: Rabbit IgG

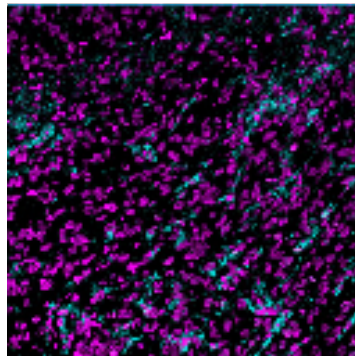
Reactivity: Human*

Application: MIBI-FFPE

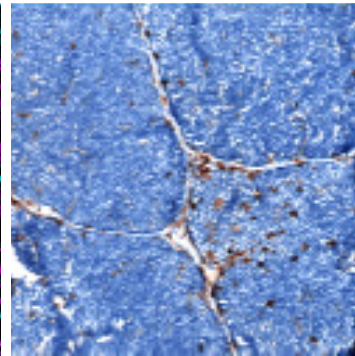
Storage: Supplied in antibody stabilizer with 0.05% sodium azide. Store at 4°C



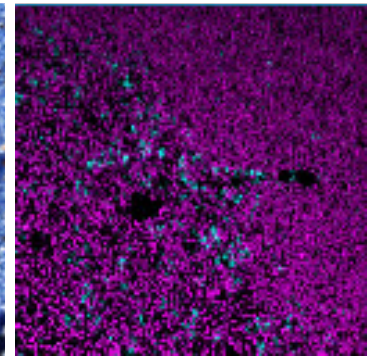
IHC: CD14 staining of FFPE human melanoma



MIBI: CD14 staining (cyan) of FFPE human melanoma, costained with dsDNA (magenta)



IHC: CD14 staining of FFPE human thymus



MIBI: CD14 staining (cyan) of FFPE human thymus, costained with dsDNA (magenta)

Background

CD14 is highly expressed on monocytes and macrophages and at much lower levels on neutrophils and some dendritic cells. Non-classical monocytes have lower expression of CD14 than classical monocytes and express CD16. CD14 recognizes pathogen-associated molecular patterns (PAMPs) and is a coreceptor for lipopolysaccharide (LPS), expressed by Gram-negative bacteria.

Validation

Each lot of conjugated antibody is quality control tested by staining tissue following the MIBI Staining Protocol optimized for the applicable tissue format with subsequent MIBIScope analysis of stained tissue microarray using the appropriate positive and negative tissue field of views.

Recommended Usage

Human FFPE: 1 ug/mL dilution. For optimal results, the antibody should be titrated for each desired application.

References

Ziegler-Heitbrock, L. Blood Monocytes and Their Subsets: Established Features and Open Questions. *Front Immunol.* 2015; 17(6):423.

* Conjugate tested on human tissue.