

PAX5 [D7H5X] - 166Er

Catalog: 716610

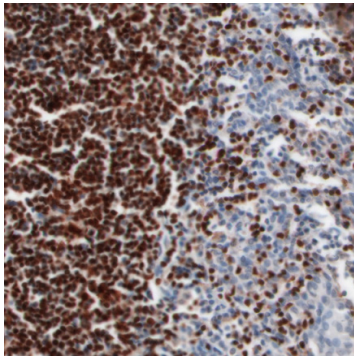
Clone: D7H5X

Isotype: Rabbit IgG

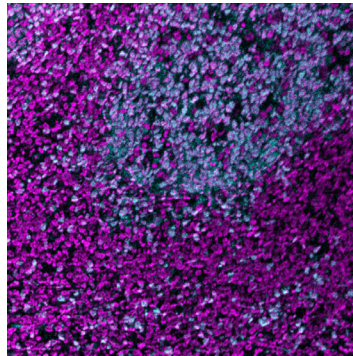
Reactivity: Human*, Mouse*

Application: MIBI-FFPE

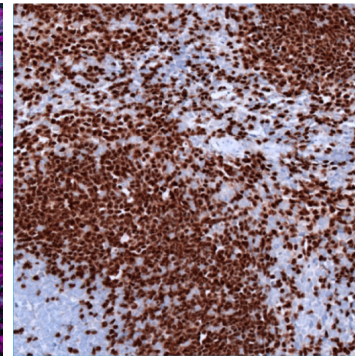
Storage: Supplied in antibody stabilizer with 0.05% sodium azide. Store at 4°C



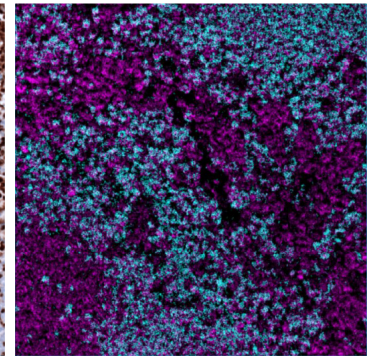
IHC: PAX5 antibody staining of FFPE human tonsil



MIBI: PAX5 staining (cyan) of FFPE human tonsil, counterstained with dsDNA (magenta)



IHC: PAX5 antibody staining of FFPE mouse spleen



MIBI: PAX5 staining (cyan) of FFPE mouse spleen, counterstained with dsDNA (magenta)

Background

PAX5, also known as B cell-specific activator protein (BSAP), is a B cell-specific transcription factor that shows nuclear staining and is useful in identifying cells of B-cell lineage. Pax5 represses the transcription of lineage-inappropriate genes and concurrently activates the expression of B-lymphoid signaling molecules. Pax5 staining is used in the diagnosis and subclassification of lymphomas.

Validation

Each lot of conjugated antibody is quality control tested by staining tissue following the MIBI Staining Protocol optimized for the applicable tissue format with subsequent MIBIScope analysis using the appropriate positive and negative tissue field of views.

Recommended Usage

Human FFPE: 2 ug/mL dilution.
 Mouse FFPE: 4 ug/mL dilution.
 For optimal results, the antibody should be titrated for each desired application.

References

Busslinger M. Transcriptional control of early B cell development. *Annu Rev Immunol.* 2004; 22:55-79.

Feldman A.L., Dogan A. Diagnostic uses of Pax5 immunohistochemistry. *Adv Anat Pathol.* 2007;14(5):323-34.

* Conjugate tested on human tissue and mouse tissue.