

Podoplanin [D2-40] - 170Er

Catalog: 717002

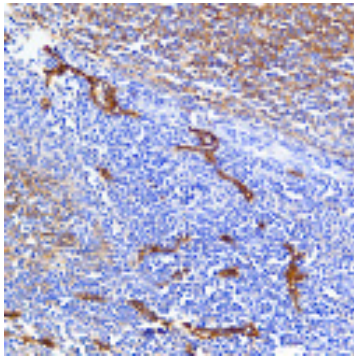
Clone: D2-40

Isotype: Mouse IgG1

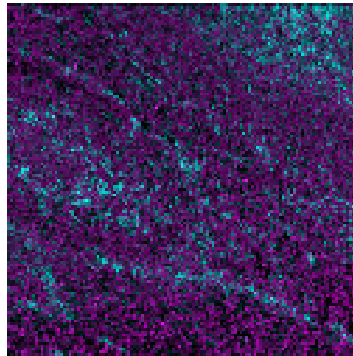
Reactivity: Human*

Application: MIBI-FFPE

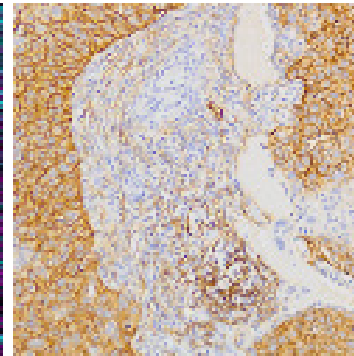
Storage: Supplied in antibody stabilizer with 0.05% sodium azide. Store at 4°C



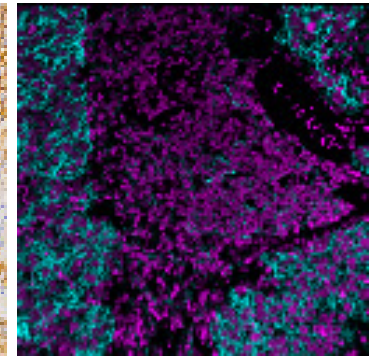
IHC: Podoplanin staining of FFPE human tonsil



MIBI: Podoplanin staining (cyan) of FFPE human tonsil, costained with dsDNA (magenta)



IHC: Podoplanin staining of FFPE human lung squamous cell carcinoma



MIBI: Podoplanin staining (cyan) of FFPE human lung squamous cell carcinoma, costained with dsDNA (magenta)

Background

Podoplanin is a mucin-type membrane protein mainly expressed on the endothelium of lymphatic vessels and variably expressed in tumor cells, such as squamous cell carcinomas, and in cancer-associated fibroblasts (CAFs). High levels of podoplanin are associated with an increased incidence of metastasis to lymph nodes and decreased survival time of patients.

Validation

Each lot of conjugated antibody is quality control tested by staining tissue following the MIBI Staining Protocol optimized for the applicable tissue format with subsequent MIBIScope analysis using the appropriate positive and negative tissue field of views.

Recommended Usage

Human FFPE: 3 ug/mL dilution. For optimal results, the antibody should be titrated for each desired application.

References

Ugorski, M., Dziegiel, P., Suchanski, J. Podoplanin – a small glycoprotein with many faces. Am J Cancer Res. 2016; **6**(2):370-86.

* Conjugate tested on human tissue.