

F4/80 [D2S9R] - 156Gd

Catalog: 715603

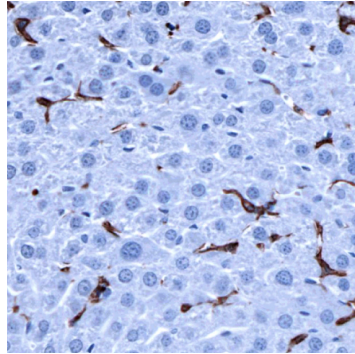
Clone: D2S9R

Isotype: Rabbit IgG

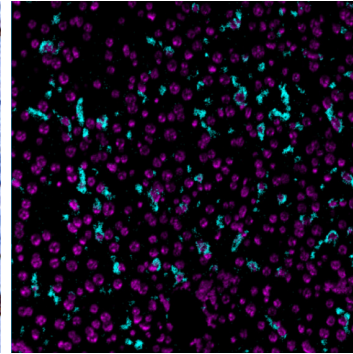
Reactivity: Mouse*

Application: MIBI-FFPE

Storage: Supplied in antibody stabilizer with 0.05% sodium azide. Store at 4°C



IHC: F4/80 staining of FFPE mouse liver



MIBI: F4/80 staining (cyan) of FFPE mouse liver, costained with dsDNA (magenta)

Background	F4/80, a murine homolog of EGF-like module-containing mucin-like hormone receptor-like 1 (EMR1), is a 160 kD glycoprotein that, in humans, is known to be expressed on eosinophils. F4/80 is a widely used marker for murine macrophages, including peritoneal macrophages, alveolar macrophages, Kuffer cells, Langerhans cells, thymus and splenic red pulp macrophages. F4/80 has also been shown to be expressed on a small subset of murine dendritic cells.
Validation	Each lot of conjugated antibody is quality control tested by staining tissue following the MIBI Staining Protocol optimized for the applicable tissue format with subsequent MIBIScope analysis of stained tissue microarray using the appropriate positive and negative tissue field of views.
Recommended Usage	Mouse FFPE: 3 ug/mL dilution. For optimal results, the antibody should be titrated for each desired application.

References

McKnight AJ et al. (1996). Molecular cloning of F4/80, a murine macrophage-restricted cell surface glycoprotein with homology to the G-protein-linked transmembrane 7 hormone receptor family. *J Biol Chem.* 5;271(1):486-9.

* Conjugate tested on mouse tissue.