

CD45 [D9M8I] - 175Lu

Catalog: 717504

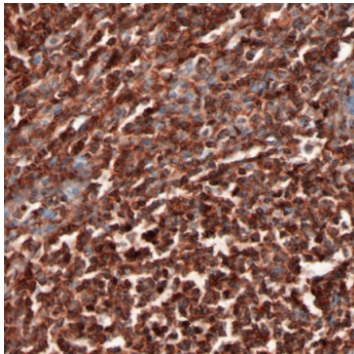
Clone: D9M8I

Isotype: Rabbit IgG

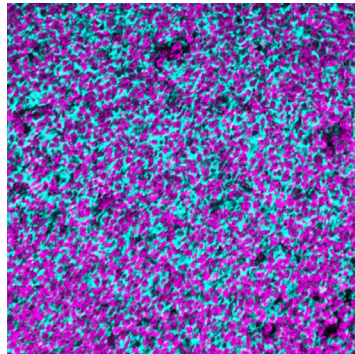
Reactivity: Human*, Monkey

Application: MIBI-FFPE

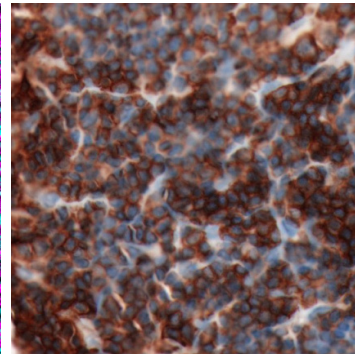
Storage: Supplied in antibody stabilizer with 0.05% sodium azide. Store at 4°C



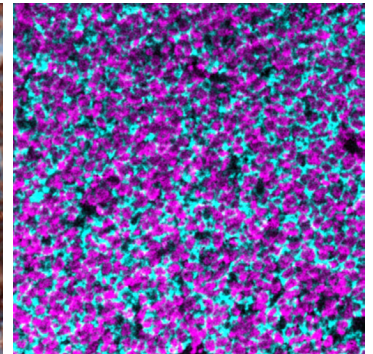
IHC: CD45 antibody staining of FFPE human tonsil



MIBI: CD45 staining (cyan) of FFPE human tonsil, counterstained with dsDNA (magenta)



IHC: CD45 antibody staining of FFPE human lymphoma



MIBI: CD45 staining (cyan) of FFPE human lymphoma, counterstained with dsDNA (magenta)

Background

CD45, also known as the leukocyte common antigen, is a type I transmembrane protein and a member of the protein tyrosine phosphatase expressed on all hematopoietic cells except mature erythrocytes, platelets and plasma cells. CD45 isoforms show cell-type and differentiation-stage specific expression, a pattern which is quite well conserved in mammals. These isoforms are often used as markers that identify and distinguish between different types of immune cells.

Validation

Each lot of conjugated antibody is quality control tested by staining tissue following the MIBI Staining Protocol optimized for the applicable tissue format with subsequent MIBIScope analysis using the appropriate positive and negative tissue field of views.

Recommended Usage

Human FFPE: 2 ug/mL dilution. For optimal results, the antibody should be titrated for each desired application.

References

Leupin O., Zaru R., Laroche T., Müller S., Valitutti S. Exclusion of CD45 from the T-cell receptor signaling area in antigen-stimulated T lymphocytes. *Curr Biol.* 2000; 10(5):277-80.

* Conjugate tested on human tissue.